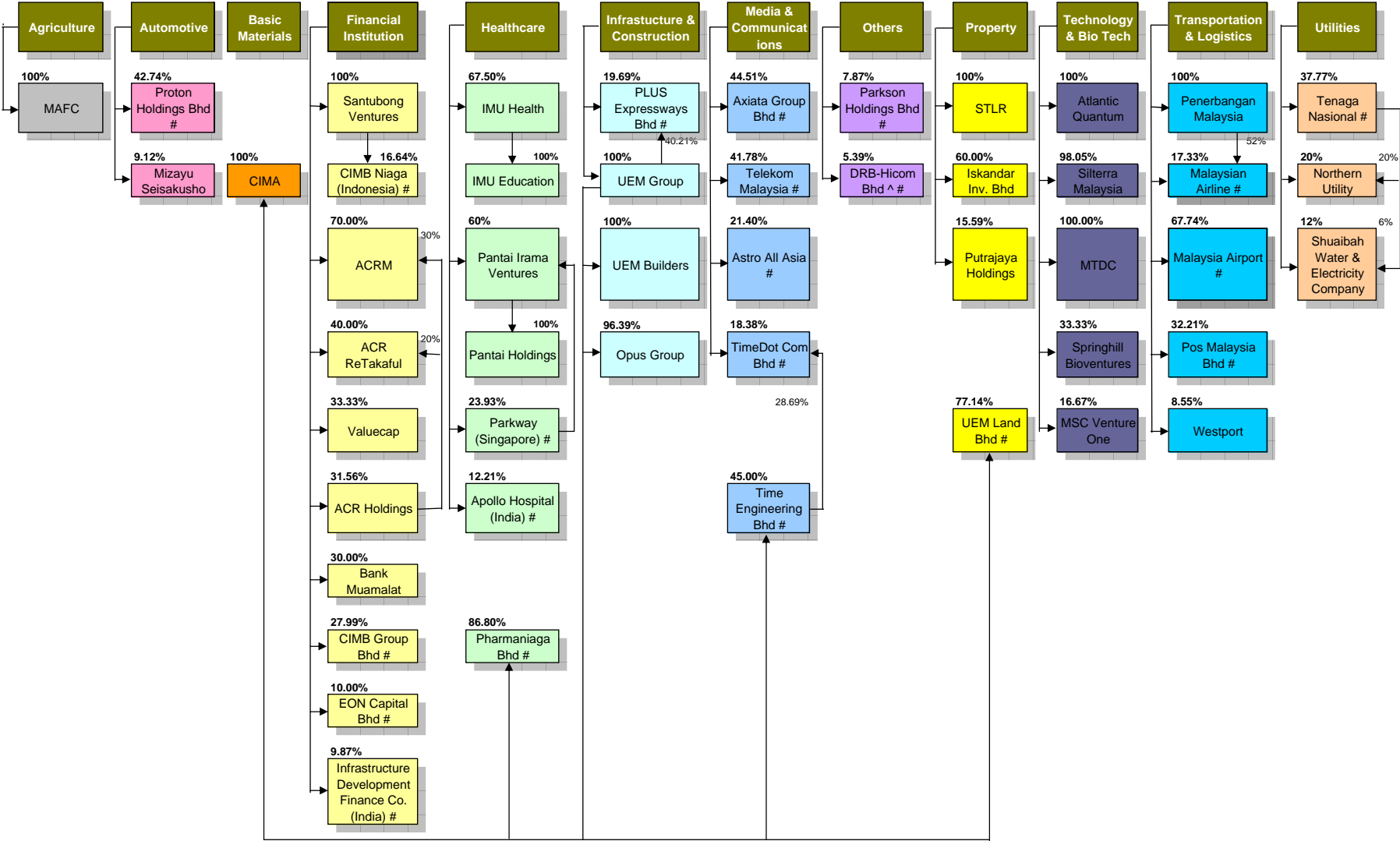


Khazanah Nasional Bhd



Legend
 # : Listed Company
 ^ : Diversify

Source : Khazanah Nasional Bhd @ 31 October 2009
 The next update will be in June 2010.

Employees Provident Fund (EPF) - listed stakes >5%

Automotive	Basic Materials	Consumer	Financial Institution	Infrastructure & Construction	Media & Communication	Others	Plantation	Property	Steel/ Cement	Technology & Bio-Tech	Timber	Transportation & Logistics	Oil & Gas	Utilities
19.09% Cycle & Carriage Bintang Bhd	10.02% Chemical Co. of Malaysia	7.62% Nestle (M) Bhd	57.57% RHB Capital Bhd	24.74% WCT Bhd	25.11% Media Prima Bhd	11.84% YTL Corp Bhd ^	16.67% Kuala Lumpur Kepong Bhd	67.33% Malaysia Building Society Bhd	9.66% Kinsteel Bhd	13.13% Globetronics Tech Bhd	9.14% Ta Ann Holdings Bhd	13.18% Malaysian Airline System Bhd	17.78% Dialog Group Bhd	16.39% Tenaga Nasional Bhd
16.03% Proton Holdings Bhd		7.38% JT International Bhd	17.28% CIMB Group Holdings Bhd	20.61% IJM Corp Bhd ^	15.91% Telekom Malaysia Bhd	9.95% DRB-Hicom Bhd ^	15.79% Sime Darby Bhd ^	29.80% Malaysian Resources Corp Bhd	6.79% Lafarge Malayan Cement	5.21% Panasonic Manufac. Malaysia		10.31% MISC Bhd	16.13% Shell Refining Co. (FOM) Bhd	11.45% YTL Power Int. Bhd
15.00% UMW Holdings Bhd ^		5.79% AEON Co. (M) Bhd	16.83% AMMB Holdings Bhd	11.12% PLUS Expressways Bhd	15.50% Axiata Group Bhd	9.92% PPB Group Bhd ^	15.42% Genting Plantations Bhd	12.20% KLCC Property Holdings Bhd				9.96% AirAsia Bhd	14.13% Petronas Gas Bhd	10.48% PBA Holdings Bhd
9.11% Tan Chong Motor Holdings		5.28% Amway (M) Holdings Bhd	14.75% Public Bank Bhd	10.68% Zelan Bhd	14.08% Star Publications (M) Bhd	9.67% Oriental Holdings Bhd ^	14.46% United Plantations Bhd	11.81% SP Setia Bhd				9.88% POS Malaysia Bhd	9.98% KNM Bhd	9.34% Puncak Niaga
5.27% MBM Resources Bhd			13.75% Alliance Fin. Group Bhd	10.54% MTD ACPI Eng. Bhd ^	12.34% Digi.Com Bhd	6.53% MMC Corp Bhd ^	13.28% IOI Corp Bhd	10.04% Sunrise Bhd				8.16% Malaysian Bulk Carriers Bhd	8.99% Wah Seong Corp Bhd ^	
			12.39% Malayan Banking Bhd	8.19% Muhibbah Engineering (M) Bhd ^	10.53% New Straits Times Press (M) Bhd	7.99% Hexagon Holdings Bhd ^	10.67% IJM Plantations Bhd	9.86% Land & General Bhd				6.72% Lingkaran Trans Kota	7.00% Kencana Petroleum Bhd	
			11.90% EON Capital Bhd	7.18% MTD Capital Bhd			5.74% Kwantas Corp Bhd	8.41% IGB Corp Bhd					6.64% Petronas Dagangan	
			10.42% Hong Leong Bank Bhd	6.47% Hock Seng Lee Bhd				6.69% NAIM Holdings						
			5.66% BIMB Holdings Bhd	6.25% Gamuda Bhd ^				5.46% Selangor Properties Bhd						
			5.08% Allianz Malaysia Bhd	5.37% Bintai Kinden Corp Bhd										

Legend

^ : Diversify

Source : Annual Reports 2009
: Bursa Announcements
: MSWG Tracker
: Malaysian Business, 2009

The next update will be in June 2010

Permodalan Nasional Berhad (PNB) - listed stakes >5%

Automotive	Basic Materials	Consumer	Financial Institution	Heavy Equipment	Infrastructure & Construction	Integrated livestock farming & culturing	Others	Parts & components manufacturing	Plantation	Property	Steel Related	Technology & Bio-Tech	Timber Product	Transportation & Logistics
12.70%	13.65%	26.49%	53.94%	24.28%	8.33%	10.72%	18.74%	24.50%	12.68%	14.91%	10.68%	29.59%	5.29%	6.21%
UMW Holdings Bhd ^	Chemical Co. of Malaysia	Khee San Bhd (sweets & confection.)	MNRB Holdings Bhd	Triumphal Associates Bhd	SBC Corp Bhd	CCK Consolidated Holdings Bhd	Master-Pack Group (corrugated fibreboard cartons)	Tracoma Holdings Bhd (automotive)	Sime Darby Bhd ^	Malaysia Building Society	FACB Industries Bhd	Ya Horng Electronic (M) Bhd	Malaysia Aica Bhd	POS Malaysia Bhd
	6.66%	25.85%	6.95%				12.93%	15.55%		12.92%		25.90%		
	Kia Lim Bhd (building material)	Bonia Corp Bhd	BIMB Holdings Bhd				Goldis Bhd ^	Sunchirin Ind. (M) Bhd (automotive)		Perak Corp Bhd		Formosa Prosonic Inds Bhd		
	5.50%	18.38%	6.11%				5.22%	7.23%		6.53%		23.84%		
	Titan Chemicals Corp	C.I. Holdings Bhd (permanis)	Malayan Banking Bhd				MMC Corp Bhd ^	Changhuat Corp Bhd (plastic injection moulded)		SP Setia Bhd		Heitech Padu Bhd		
		13.54%					5.18%	6.71%		5.45%		22.30%		
		Asia File Corp Bhd (stationery)					Pan Malaysian Industries Bhd ^	BSA International Bhd (automotive alloy wheels)		Metro Kajang Holdings		PNE PCB Bhd		
		8.30%					13.12%			5.13%		17.15%		
		Pan Malaysia Corp ^					Amanah Harta Tanah PNB 2 #			Mah Sing Group Bhd		I-Bhd		
		7.69%										12.44%		
		Chee Wah Corp Bhd (stationery)										ENG Teknologi Holdings		
												10.54%		
												Multi-Code Electronics Industries		
												7.10%		
												Hock Sin Leong Grp		
												5.57%		
												Pensonic Holdings Bhd		

Legend
 ^ : Diversify
 # : Suspended

Source : Annual Reports
 : Bursa Announcements
 : MSWG Tracker
 : Malaysian Business, 2009

The next update will be in June 2010.

Lembaga Tabung Haji (LTH) - listed stakes >5%

Consumer	Finance/ REIT	Industrial Product	Infrastructural & Construction	Oil & Gas	Property Development	Plantations	Steel	Technology	Trading & Services
29.53% Silver Bird Group Bhd	41.92% BIMB Holdings Bhd	17.95% Ornapaper Bhd	10.44% Muhibbah Engineering (M) Bhd	29.68% Ramunia Holdings Bhd	9.45% KSL Holdings Bhd	67.89% TH Plantations Bhd	9.95% Malaysia Steel Works KL Bhd (industrial)	16.22% KESM Industries Bhd (semiconductors)	10.40% Konsortium Logistik Bhd
27.84% Pelikan Int. Corp Bhd	13.17% Al-Aqar KPJ REIT	15.08% Astral Supreme Bhd	10.00% Mudajaya Group Bhd	10.06% Petra Perdana Bhd	8.01% Hunza Properties Bhd	5.35% Hap Seng Plantations Bhd	9.03% Hiap Teck Venture Bhd (Industrial)	10.52% ENG Teknologi Holdings	9.91% Hexagon Holdings Bhd ^
24.44% KFC Holdings (M) Bhd		13.05% Southern Acids Malaysia Bhd #	10.00% MTD ACPI Engineering Bhd	7.84% APB Resources (fabrication)	6.86% Naim Holdings Bhd		7.57% CSC Steel Hldgs (industrial)	9.95% MEMS Tech Bhd (micro electro mechanical syst)	9.89% QSR Brands Bhd
15.11% Tafi Industries Bhd (home & office furniture)		10.00% Yi-Lai Bhd (ceramic & tiles)	9.86% TRC Synergy Bhd	7.63% Alam Maritim Resources (offshore support)	5.62% YNH Property Bhd		6.82% Choo Bee Metal Industries (Industrial)	7.24% Uchi Technologies Bhd (micro processor etc)	9.88% Progressive Impact Corp (environmental consulting etc)
12.87% Biosis Group Bhd (healthcare/ pharmaceutical)		10.00% Dufu Tech Corp Bhd (hard disc & drive)	9.15% Protasco Bhd	6.39% Uzma Bhd (geoscience & reservoir engineering)	5.03% SHL Consolidated Bhd		6.48% Unisem (M) Bhd (cirouit/ semi conductor etc)	9.42% Integrated Logistics Bhd (warehousing, forwarding etc)	
11.99% Y.S.P. Southeast Asia Hldg (pharmaceutical & veterinary)		10.00% Century Bond Bhd (paper & plastic based packaging)	9.09% TSR Capital Bhd	6.24% Tanjong Offshore Bhd				9.24% My EG Services Bhd (software & e-services)	
9.16% NTPM Holdings Bhd (paper, cotton, diaper, sanitary)		9.98% Supermax Corp Bhd (glove mfc)	8.10% Melati Ehsan Holdings Bhd	5.21% Petra Energy Bhd				8.16% Engtex Group Bhd (wholesale & distribution)	
8.45% Spritzer Bhd (mineral water related)		9.91% Malaysian AE Model Hldg (automated mat. Handling solution)	6.37% Brem Holdings Bhd	5.15% Dialog Group Bhd				7.57% Scicom (MSC) Bhd (biz process outsourcing)	
7.52% Ekowood International Bhd (d/stream wood products)		9.40% White Horse Bhd (ceramic & tiles)	5.53% MTD Capital Bhd					7.38% Frontken Corp Bhd (surface metamorphosis technology etc)	
5.02% Zhulian Corp Bhd (mim in healthcare)		9.35% Evergreen Fibreboard Bhd						6.50% Cheetah Holdings (apparel etc)	
		8.56% Coastal Contracts Bhd (ship bldg & repair etc)						6.24% Padiberas Nasional Bhd	
	7.80% CB Industrial Product (palm oil mill equipmt)	7.67% Techfast Holdings (electronic hardware)	6.88% YLI Holdings Bhd (iron pipes, water works etc)					5.19% Swee Joo Bhd (shipping services)	
	6.83% Three-A Resources (mfg malto dextrin)	6.66% Favelle Favco Bhd (crane related)	6.46% Tasek Corp Bhd (cement etc)						
	6.22% APM Automotive Hldg (automotive parts)	6.17% Leader Universal Hldg (cable & wire)	5.82% P.I.E. Industrial (cable & wire etc)						
	5.71% Imaspro Corp (mfg pesticides, agrochemical etc)	5.35% LCTH Corp Bhd (precision plastic parts)	5.23% Mieco Chipboard Bhd						
	5.15% Sino Hua-An International (coke)	5.00% Weida Malaysia Bhd (mfg/ works)							

Legend

- ^ : Diversify
- # : Receiver & Manager appointed

Source : Annual Reports
: Bursa Announcements
: MSWG Tracker
: Malaysian Business, 2009

The next update will be in June 2010.

Lembaga Tabung Angkatan Tentera (LTAT) - listed stakes >5%

Consumer	Finance	Industrial	Plantation	Property	REIT	Steel Related	Trading & Services
8.24%	35.67%	18.98%	60.46%	10.00%	13.82%	10.02%	15.00%
Wang- Zheng Bhd (diapers & sanitary etc)	Affin Holdings Bhd	Tien Wah Press Hld. (printing specialist)	Boustead Holdings Bhd	Prime Utilities Bhd	Al-Hadharah Boustead	CSC Steel Holdings (industrial)	DKSH Holdings (general trading)
6.36%	6.03%	6.25%	5.05%			5.38%	9.65%
Biosis Group (health care/ pharmaceutical)	AEON Credit Services (M) Bhd	UMS- Neiken Group (wiring, appliances etc)	Genting Plantations Bhd			A-Rank Bhd (aluminium billets)	Atis Corp Bhd (electrical/ electronic)
5.29%		5.96%					8.55%
Kawan Food Bhd		Wah Seong Corp Bhd (oil & gas)					AEON Co (M) Bhd
		5.42%					
		Pelangi Publishing (books, educational materials)					

Source : Annual Reports
 : Bursa Announcements
 : MSWG Tracker
 : Malaysian Business, 2009

The next update will be in June 2010.